

WALL PLUG-IN MONOBLOCK TECHNICAL DATA SHEET MOD. IPAM403A

Technical data

Type	Compact
Mounting	Wall
Code	IPAM403A
Condensation	Air
Net weight	50,0 Kg
PED	1
Defrost	Hot gas
Expansion	Capillary
Application	MBP
Refrigerant	R452A

Dimensions

Width W	400 mm
Depth D	922 mm
Height H	800 mm

Absorption

Power consumption	770W - 820 W
Current consumption	3 A – 3,6 A

Condenser

Number of fan-motors	1
Diameter	254 mm
Air flow	620 m ³ /h

Evaporator

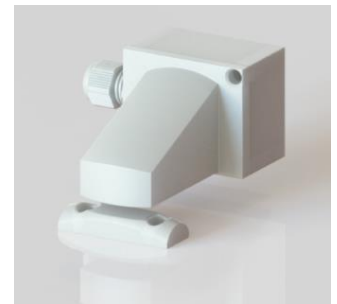
Number of fan-motors	1
Diameter	254 mm
Air flow	750 m ³ /h
Air throw	6 m

Compressor

Type	Hermetic
Number of compressors	1 (AE4470Z)
Brand	TECUMSEH
Voltage	220-240/1/50
Displacement	12 cm ³ -5/8hp



LED light



Magnetic door micro-switch

Table of cooling capacities in W and in cold room m³ - MOD. IPAM403A - R452A

AMBIENT T.	COLD ROOM T.									
	5°C		2°C		0°C		-2°C		-5°C	
	W	m ³	W	m ³	W	m ³	W	m ³	W	m ³
25°C	1410	19,1	1300	14,2	1240	12	1170	10,5	1070	8,1
32°C	1300	12,5	1200	9,5	1140	8	1080	7	990	5,4
38°C	1200	9,6	1110	7,4	1050	6,2	990	5,3	910	4,1
43°C	1110	8,6	1030	6,6	970	5,5	920	4,7	840	3,6

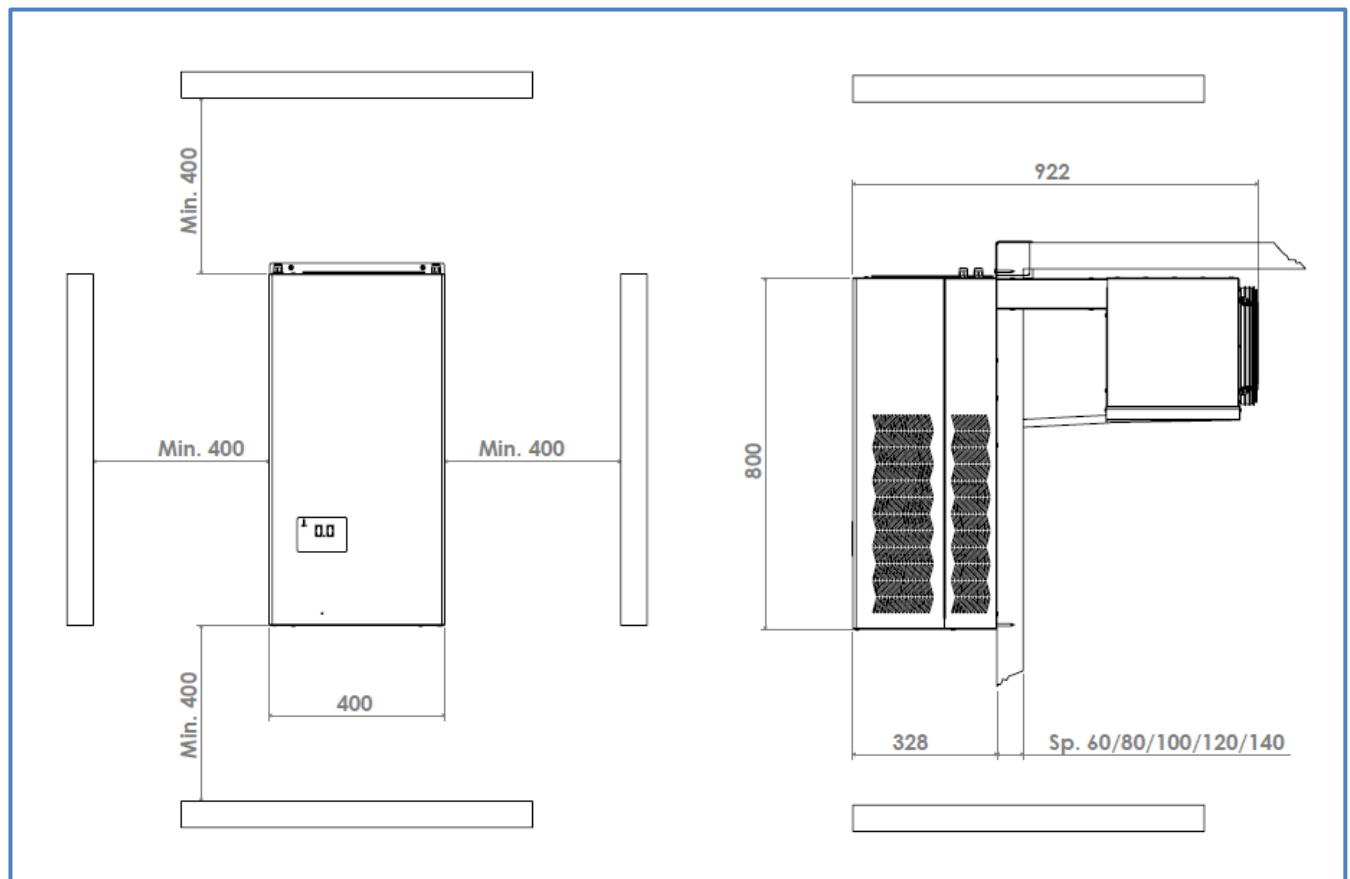
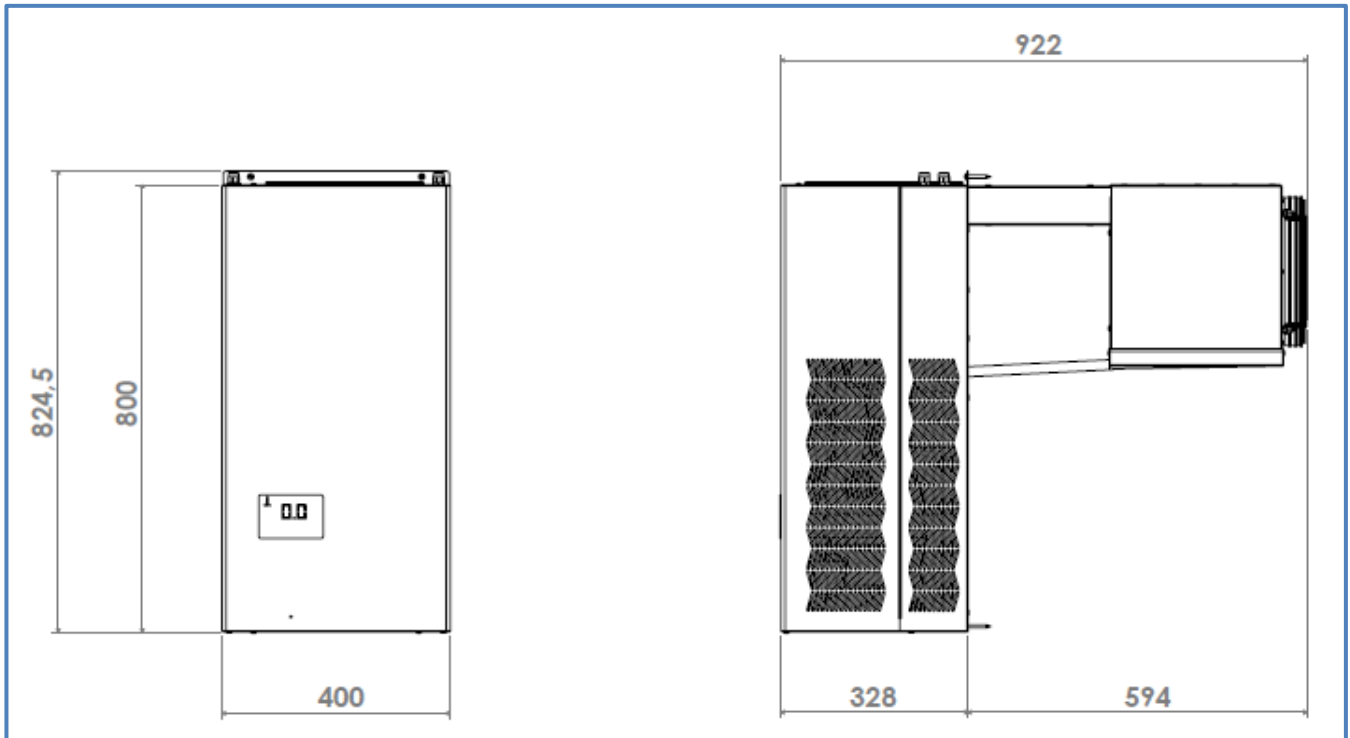
Technical features (standard)

- Structure in zinc-plated metal sheet coated with epoxy primer and powder;
- Easily removable front cover to facilitate both verification and maintenance operations;
- Internal arrangement of components designed to facilitate their maintenance;
- Hermetic compressors with thermal motor protection;
- Heat exchangers with striped copper and aluminium pipes;
- Air condensation;
- Air evaporation;
- Capillary or thermostatic valve expansion;
- Programmable hot gas defrosting;
- Heating cable for condensate drain in both NT and LT;
- Stainless steel tray for condensed water evaporation equipped with a copper coil with cataphoresis coating and an overflow exhaust pipe;
- High-pressure safety pressure switch (automatic reset/fixed setting);
- Electronic control unit;
- Programmable electronic board with touch control display;
- Control unit designed for remote management via Wi-Fi module (optional);
- Cold room light with cable L=2,5m;
- Magnetic micro-switch with cable L=2,5m;
- Power cable L=2,5m;
- Packaging with wooden pallet and cardboard (included)

Optional on request

- Low-pressure switch (automatic reset/fixed setting);
- Wi-Fi module for remote management;
 - Condenser fan speed control with pressure switch;
 - Condenser fan speed control with pressostatic speed variator;
 - Compressor crankcase heater
 - Remote control panel with cable of 5/10/15/20m;
 - Length increase for machine's power cables, light cable and door micro-switch cable (5/10/15/20m);
 - Voltage monitor for three-phase application;
 - Packaging with wooden cage;
 - Cataphoresis treatment on evaporator and/or condenser;

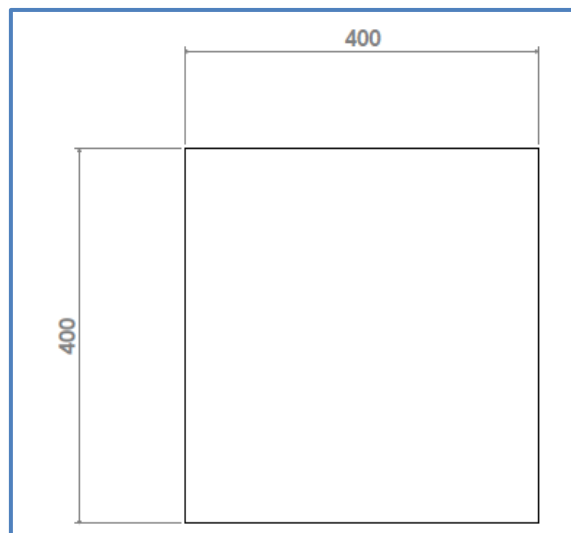
400 series wall monoblock dimensions



**Wall monoblock “PLUG-IN” version
(STANDARD)**



Hole size in the cold room panel



**Wall monoblock “SADDLE” version
(OPTIONAL)**



Hole size in the cold room panel

